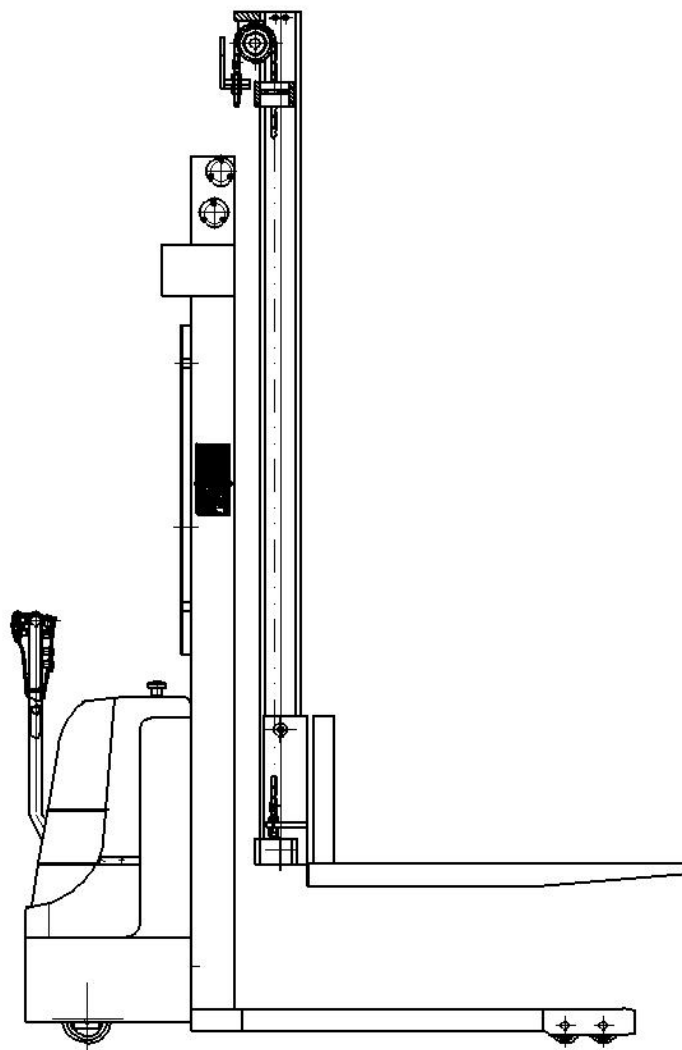


KX-CDD-B Electric Stacker

Instruction Manual



CONTENTS

1. PROPER USAGE.....	- 1 -
2. OVERVIEW OF THE ELECTRIC STACKER.....	- 2 -
3. TECHNICAL DATA.....	- 3 -
4. INFRASTRUCTURE.....	- 4 -
5. LOAD DIAGRAM.....	- 5 -
6. OPERATING HANDLE ASSEMBLY DIAGRAM.....	- 6 -
7. OPERATING INSTRUCTIONS.....	- 6 -
8. MAINTENANCE.....	- 7 -
9. MALFUNCTION ANALYSIS AND SOLUTION.....	- 8 -

Warning

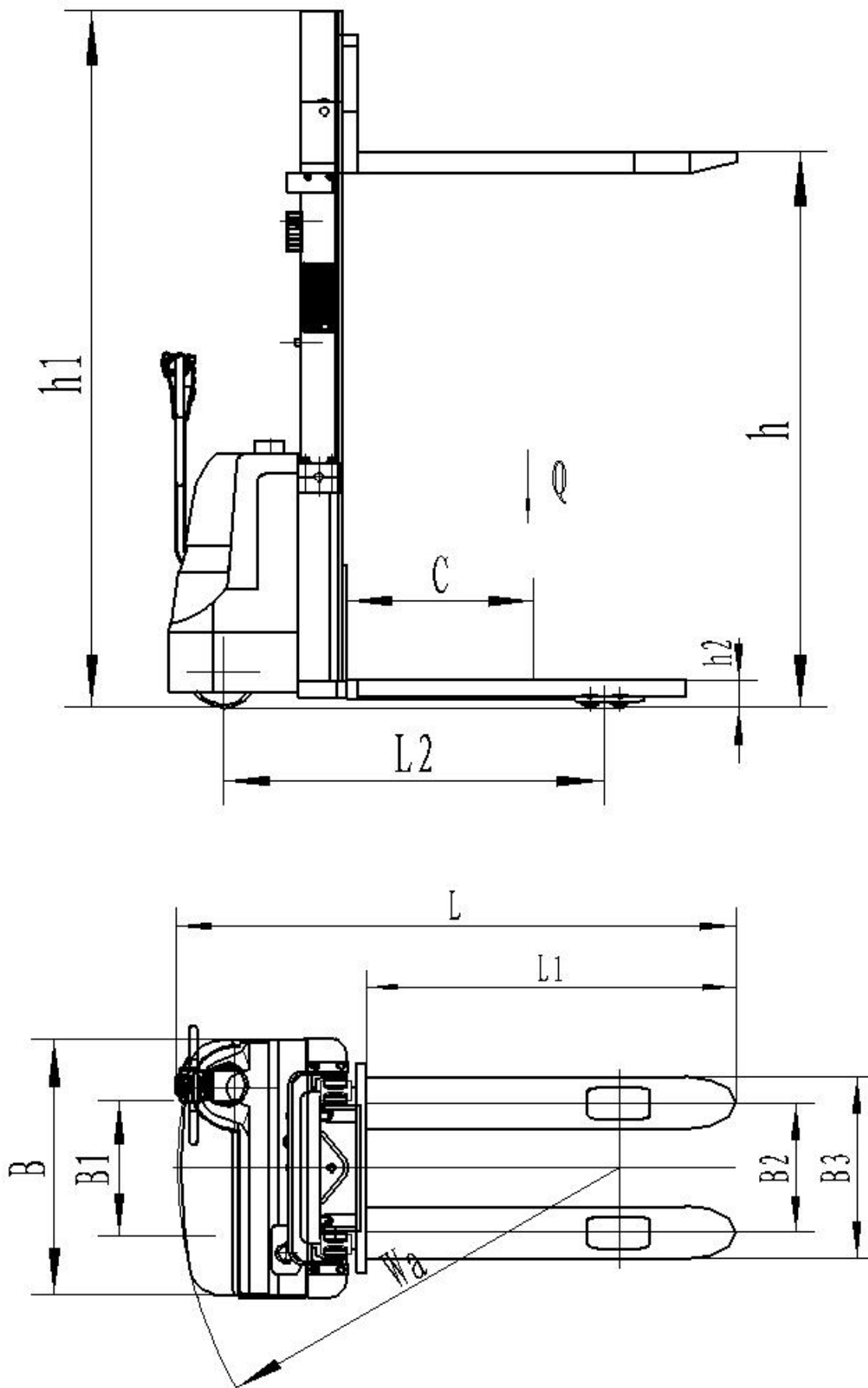
Please read this instruction manual carefully before using the KX-CDD-B electric stacker.

This manual works for all KX-CDD series electric stacker, and we reserve our rights for technical reform. Pictures and object maybe slightly different, please in kind prevail.

1.PROPER USAGE

- 1.1 The electric stacker described in the manual has following functions: travelling, fork raising, fork lowering, going back, and etc.. All functions can be easily achieved by using handle.
- 1.2 The electric stacker should be used on the flat ground. Staff should know the stacker's function, structure, and maintenance clearly before using.
- 1.3 Please make sure that the stacker is normal before using. Correctly using can increase work efficiency.
- 1.4 In order to avoid dangerous, please make sure there is nobody around forks except the stacker operator when loading and unloading goods. It is prohibited to use stacker to carry people and dangerous cargo. When delivering cargos, the fork should be lower than 300mm.
- 1.5 Please follow the instructions, and do not overload.

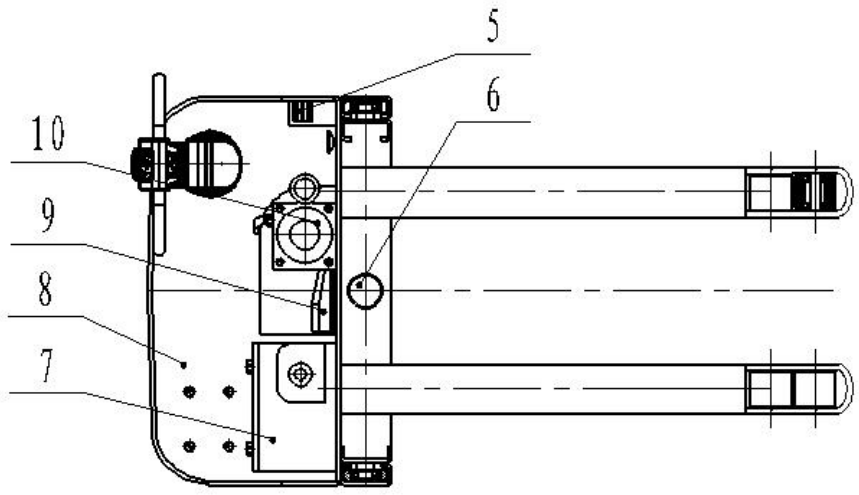
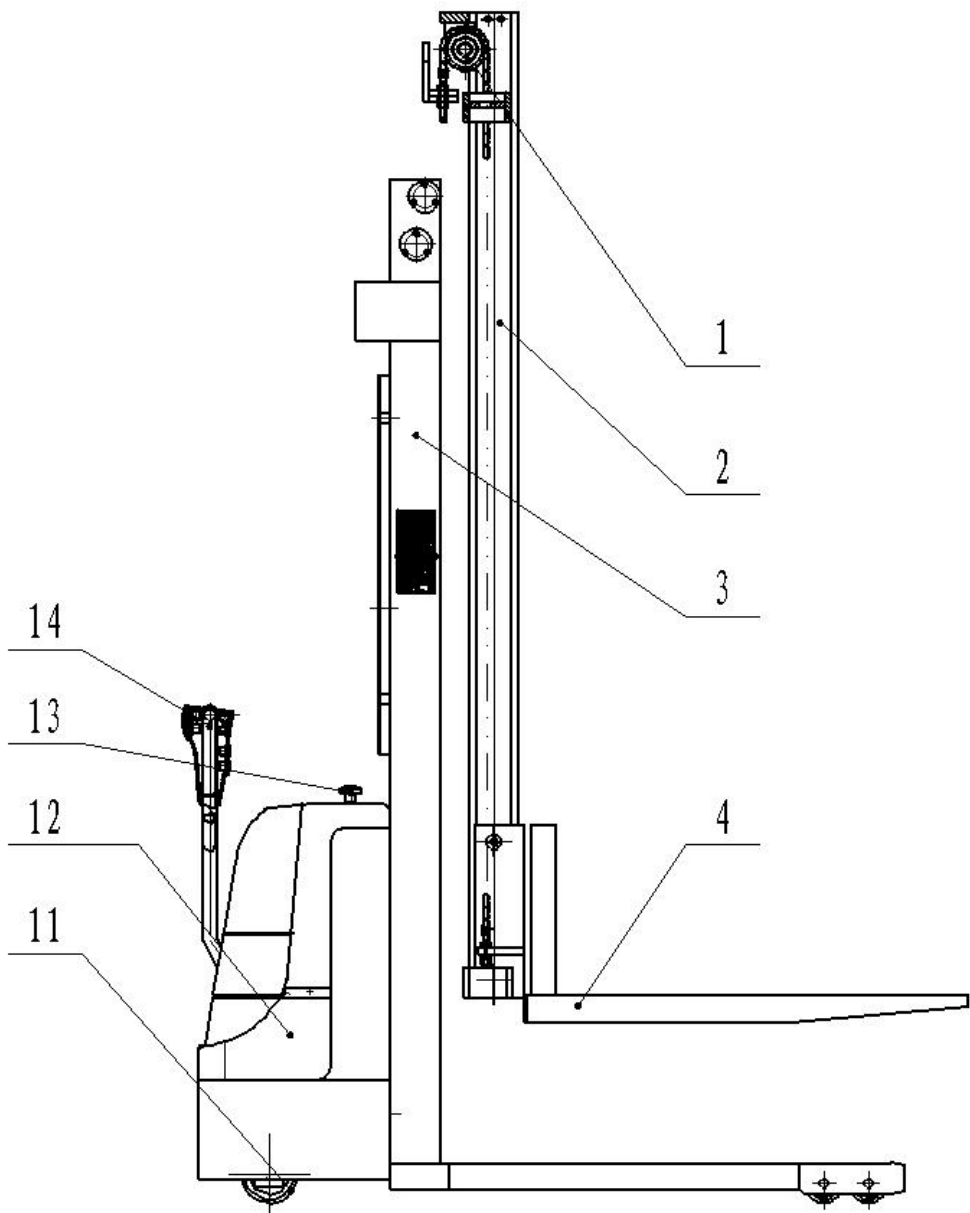
2.OVERVIEW OF THE ELECTRIC STACKER



3. TECHNICAL DATA

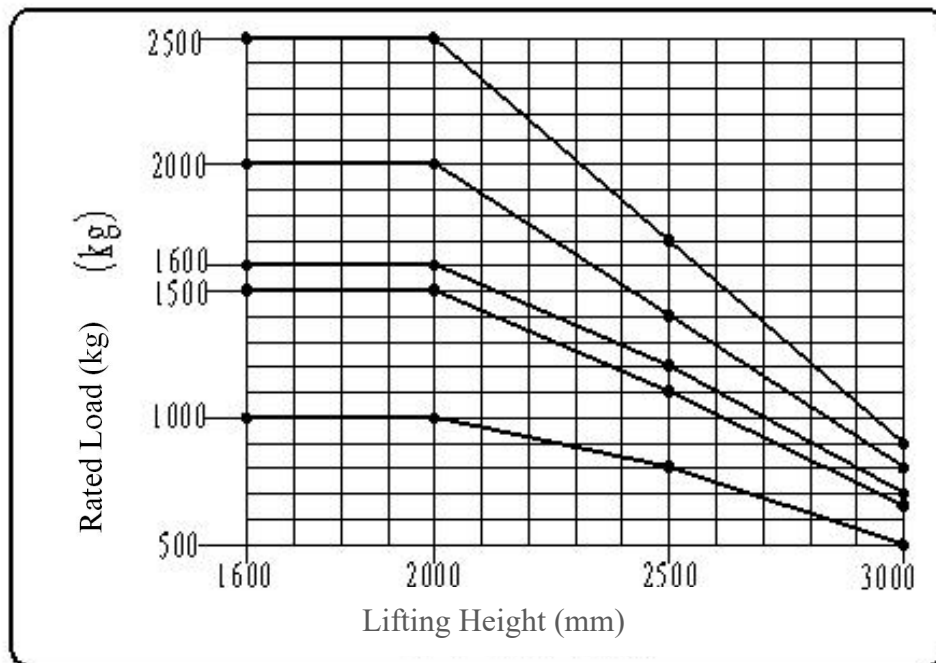
Model	Unit	KX-CDD-B10	KX-CDD-B16
Rated load Q	lb	2200	3500
Load center distance C	in	19.6	
Lifting height h	in	62.9/98.4/118	
Max. gantry mounting height h1	in	81/120/140	
Fork's lowest height h2	in	3.3	
Machine length L	in	69	
Fork length L1	in	45.2	
Wheel base length L2	in	45.6	
Overall width B	in	31.4	
Track rear B1	in	20.3	
Track front B2	in	21	
Fork width B3	in	27.3	
Turning radius Wa	in	53.5	
Driving speed. No-load/Full-load	fpm	246/218	
Lifting speed. No-load/Full-load	fpm	29.5/19.6	
Lowering speed. No-load/Full-load	fpm	25.5/29.4	
Lifting motor	V/A	24/80	
Battery voltage/rated capacity	V/Ah	2*12/85	
Drive control mode	V/Ah	Controller	
Weight	lb	1018	1067

4.INFRASTRUCTURE

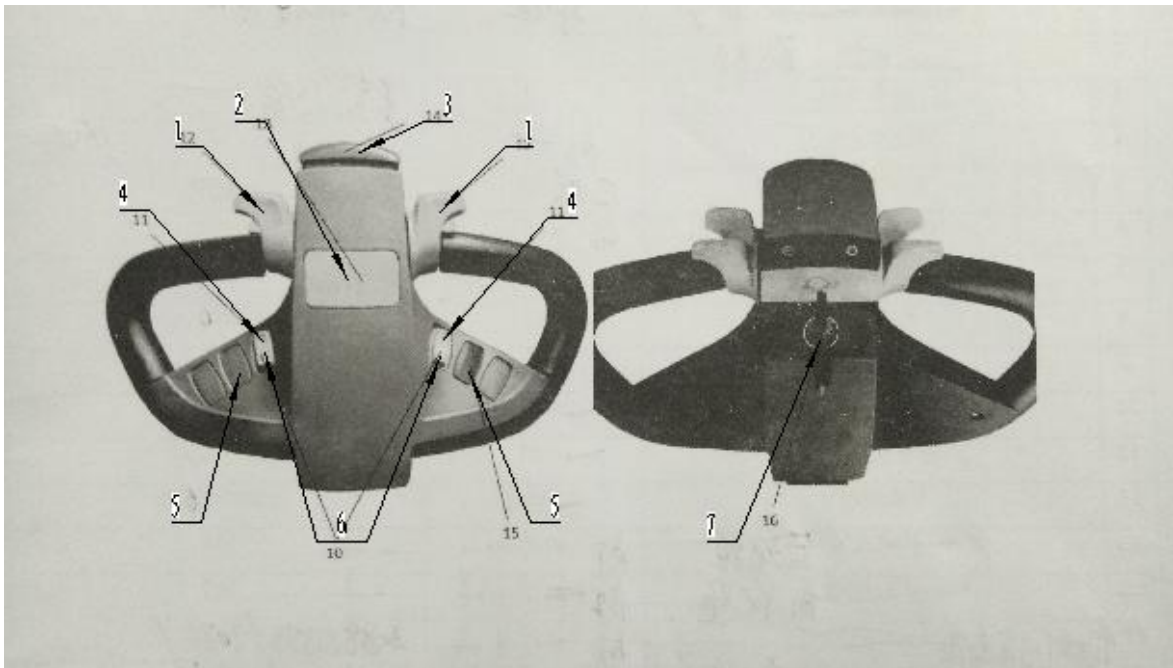


No.	Name	No.	Name
1	Lifting chain component	8	Rear frame component
2	Inner gantry mounting component	9	Electric controller
3	Outer gantry mounting component	10	Hydraulic station assembly
4	Fork component	11	Driving wheel component
5	Socket	12	Cover component
6	Hydraulic cylinder component	13	Emergency stop switch
7	Battery component	14	Operating handle component

5.LOAD DIAGRAM



6. OPERATING HANDLE ASSEMBLY DIAGRAM



No.	Name	No.	Name
1	Travel switch	5	Voltmeter
2	Alarm	6	Lowering button
3	Anti-collision button	7	Electric door lock
4	Raising button		

7. OPERATING INSTRUCTIONS

- 1.1 KX-CDDQ electric stacker has an emergency stop switch (13). Before using, turn off the emergency stop switch, insert the key into the electric door lock (7), clockwise rotation (turn on), and check the voltmeter.
- 1.2 Use the lowering button (6) to fall forks to the lowest position when load or unload cargos. The center of gravity of cargos should be on the center of forks, and cargos should not be overweight or oversize. Use the raising button (4) to lift forks, and press the Alarm button to remind the others to avoid the collision.
- 1.3 Use the travel button (1) to start the stacker, and please pay cautions to slope and uneven ground. When placing cargos on the goods shelf, press raising button (4) to lift goods to the specified height; press anti-collision button (3) to move the stacker to the location; press lowering button to lower forks until the cargo is placed on the goods shelf; moving stacker to safety area; turn off power, and then turn on emergency stop switch.
- 1.4 When the stacker break down or out of control, please press the emergency stop switch. If

possible, please stop stacker at the safety area, rotate the key anticlockwise, pull out the key, and then inform maintenance department or service department.

- 1.5 In order to keep stacker working well, please use HL-N46 hydraulic oil when temperature is from -0 °C to 46 °C, or use HV-N46 hydraulic oil when temperature is from -1°C to -46 °C.
- 1.6 Only professional serviceman can maintain, change, or charge the battery. Please follow the instructions, and the used battery should be disposed according to national law.
- 1.7 Please charge immediately (Do not over 24 hours), when battery is fully discharged or charging signal is on, otherwise, it may shorten the service life of battery. If not use tow truck for a long time, please charge once per month. Do not over charge or over discharge, in order to avoid battery damage (charging time: 8 hours).

8.MAINTENANCE

Maintenance of machine		Interval	
		2 month	6 month
1	Check whether fastener is loose	√	
2	Check whether oil tube connection is leak	√	
3	Check whether gear case has noise or leak	√	
4	Check whether lifting system works well	√	
5	Check whether forks have crack or deformation		√
6	Check whether under pan has crack or deformation		√
7	Check whether wheels have abrasion or damage		√
Maintenance of hydraulic			
1	Check whether hydraulic oil cylinder has abrasion, noise, and damage		√
2	Check whether hydraulic adapting piece and oil tube have damage or leak	√	
3	Check whether oil level meet the standard		√
4	Check and adjust pressure valve's function (+10%) load		√
Maintenance of electric appliance			
1	Check whether cable, connector, and terminal connect well		√
2	Check the function of emergency stop switch	√	
3	Check whether motor drive system works well	√	
4	Check whether use correct fuse	√	
5	Check whether contactor, display, and buzzer work well	√	
6	Check whether control system works well		√
7	Check whether electric system works well		√

9.MALFUNCTION ANALYSIS AND SOLUTION

Malfunction	Cause	Solution
Voltmeter has no display after opening electric door lock	The fuse of electric system is burn out or the electric door lock is damaged	Change fuse or electric door lock
Hydraulic station and motor pump have noise when working	The magnetic valve of hydraulic station is dirty	Clean magnetic valve
	Oily is too high	Use low oily hydraulic oil
Cannot lift cargo	Overload	Check rated load
	The Oil cylinder pressure is not enough	Check or change sealing element
	Low level of hydraulic oil	Refill hydraulic oil
	The fuse of lifting is burn out	Change fuse
	Low battery	charge
	Lock the electric door lock or turn on the emergency stop switch	Unlock the electric door lock or turn off emergency stop switch
Cannot lower forks	The magnetic valve of hydraulic station without control.	Clean or change
	Mast roller is stuck	Adjust or change
	Inner gantry mounting is oversize deformation	Adjust or change
	Oil return hole is blocking	Clean